



WEITKOWITZ
CABLE LUGS + TOOLS

hydraulic pressing tools



Battery-powered compression tool AP 10

without dies



Battery-powered hydraulic compression tool for crimping cable lugs and connectors up to 240 mm².

- Advantages:
- extremely quick processing due to a two-stage hydraulic pump
 - 180° revolving head with quick opening and closing
 - integrated pressure relief valve, false pressings cause no damage at tool nor dies
 - high capacity due to 3.0 Ah battery: approx. 120 pressings of 185 mm² with one charging
 - an electronic speed regulator integrated in the power button allows an optimal positioning of the pressing
 - high quality NiMh 14.4 voltage 3.0 Ah rechargeable battery
 - light emitting diode serves for controlling battery capacity, crimping proceeding and service intervalls
 - eyelet for balancer
 - universal usage: dies for all versions of cable lugs are available
 - possibility to use the dies of the former HP1 and AP 1 due to the multi-function head
 - **delivery completely with battery, battery charger and transport steel case (without dies)**

Measurements transport case: 570 x 420 x 103 mm

Technical data:	press capacity:	approx. 55 kN
	operating voltage:	14.4 Volt
	tool measurements:	B 90 x L 360 x H 330 mm
	weight:	4.87 kg (incl. battery)
	battery charger:	220 – 240V~ 60W 50 – 60Hz
	time of loading:	approx. 75 minutes

art.-no.: 91120



Replacement battery NiMh 14.4 Volt 3.0 Ah

art.-no.: 91123

Fast battery charger 220 – 240V~ 220W 50 – 60Hz

art.-no.: 91125

reduces time of loading to approx. 27 minutes

Hand-operated hydraulic compression tool HP 10

without dies



Hand-operated hydraulic compression tool for crimping cable lugs and connectors up to 240 mm².

- Advantages:
- extremely quick processing due to a two-stage hydraulic pump
 - extremely light, handy and compact construction form
 - 180° revolving head with quick opening and closing
 - integrated pressure relief valve, false pressings cause no damage at tool nor dies
 - universal usage: dies for all versions of cable lugs are available
 - possibility to use the dies of the former HP1 and AP 1 due to the multi-function head

Technical data:	press capacity:	approx. 55 kN
	weight:	2.45 kg
	length:	425 mm

art.-no.: 91110

**transport case out of steel
for HP 10 and dies compare page 4**

Compression dies for AP 10 and HP 10



Dies WM-shape

for crimping WEITKOWITZ cable lugs and connectors of the **standard-series**.

Not suitable for cable lugs from other manufacturers!

mm ²	art.-no.	mm ²	art.-no.
10/70	91302	120	91306
16/35	91303	150	91307
25/50	91304	185	91308
95	91305	240	91309



Dies WM-shape

for crimping cable lugs and connectors of the **euro-series**

mm ²	art.-no.	mm ²	art.-no.
6	91315	120	91320
10/70	91316	150	91307
16/35	91317	185	91308
25/50	91318	240	91309
95	91319		



Dies WM-shape

for crimping WEITKOWITZ cable lugs and connectors for **finewiring conductors**

Not suitable for cable lugs from other manufacturers

mm ²	art.-no.	mm ²	art.-no.
10f/25f	91330	95f	91334
16f/35f	91331	120f	91335
50f	91332	150f	91336
70f	91333	185f	91337



Dies hexagonal-shape

for crimping compression copper cable lugs DIN 46 235, compression copper connectors DIN 46 267 part 1 and compression aluminium and aluminium/ copper cable lugs and connectors

die code no.	Cu mm ²	Al mm ²	art.-no.
5	6	–	91343
6/16	10/70	–/50	91344
8/12	16/35	–/25	91345
10/14	25/50	16/35	91346
18	95	70	91347
20	120	–	91348
22	150	95 + 120	91349
25	185	150	91350



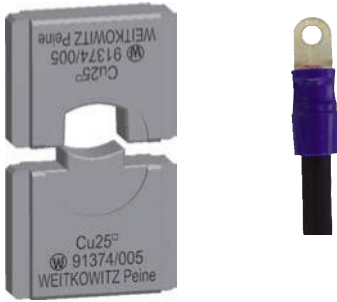
Dies mandrel-shape

for crimping noninsulated terminals DIN 46 234.

pin terminals DIN 46 230 and connectors DIN 46 341 part 1

mm ²	art.-no.
6	91465
10	91466
16	91467
25	91468
35	91469
50	91470
70	91471
95	91472
120	91473

Compression dies for AP 10 and HP 10



Dies

for crimping insulated terminals

mm ²	art.-no.
10	91372
16	91373
25	91374

mm ²	art.-no.
35	91375
50	91376
70	91377



Dies square-shape

for crimping cord-end-sleeves
crimping width: 19 mm

mm ²	art.-no.
6	91383
10	91384
16	91385
25	91386
35	91387

mm ²	art.-no.
50	91388
70	91389
95	91390
120	91391



Dies mandrel-shape

for stainless steel cable lugs

mm ²	for use*	art.-no.
1,5 - 2,5	VA / Cu	91480
4-6	VA / Cu	91481
10	VA / Cu	91482
16	VA / Cu	91483
25	VA / Cu	91484
35	VA	91485
35	Cu	91486

* = VA / Cu: for stainless steel ropes and copper-conductors (finewiring and stranded-precompressed)

VA: only for stainless steel ropes

Cu: only for copper conductors (finewiring and stranded-precompressed)



Dies for round forming

for rounding sector-shaped copper and aluminium conductors
crimping width: 12 mm

mm ² sm	mm ² se	art.-no.
10	–	91450
16	–	91451
25	35	91452
35	50	91453
50	70	91454

mm ² sm	mm ² se	art.-no.
70	95	91455
95	120	91456
120	150	91457
150	185	91458
185	240	91459
240	300	91460



Cutting die

art.-no. 90354

for coarsewiring aluminium and copper cables without steel insertion up to 12 mm Ø.



Transport case

art.-no. 91112

Varnished steel box for keeping the HP10 and up to 21 pairs of dies

Battery-powered compression tool AP 20

without dies



Battery-powered hydraulic compression tool for crimping cable lugs and connectors up to 300 mm².

- Advantages:
- extremely quick processing due to a two-stage hydraulic pump
 - wide application range up to 300 mm²
 - 180° revolving head with quick opening and closing
 - integrated pressure relief valve, false pressings cause no damage at tool nor dies
 - high capacity due to 3.0 Ah battery: approx. 120 pressings of 185 mm² with one charging
 - an electronic speed regulator integrated in the power button allows an optimal positioning of the pressing
 - high quality NiMh 14.4 voltage 3.0 Ah rechargeable battery
 - light emitting diode serves for controlling battery capacity, crimping proceeding and service intervalls
 - eyelet for balancer
 - universal usage: dies for all versions of cable lugs are available
 - **delivery completely with battery, battery charger and transport steel case (without dies)**

Measurements transport case: 570 x 420 x 103 mm

Technical data:	press capacity:	approx. 62 kN
	operating voltage:	14.4 Volt
	tool measurements:	B 90 x L 365 x H 310 mm
	weight:	5.10 kg (incl. battery)
	battery charger:	220 – 240V~ 60W 50 – 60Hz
	loading time:	approx. 75 minutes

art.-no.: 91140



Replacement battery NiMh 14.4 Volt 3.0 Ah

art.-no.: 91123

Fast battery charger 220 – 240V~ 220W 50 – 60Hz

art.-no.: 91125

reduces time of loading to approx. 27 minutes

Hand-operated mechanical compression tool HP 20

without dies



Hydraulic hand-operated compression tool for crimping cable lugs and connectors up to 300 mm².

- Advantages:
- extremely quick processing due to a two-stage hydraulic pump
 - extremely light, handy and compact construction form
 - wide application range up to 300 mm²
 - 180° revolving head with quick opening and closing
 - integrated pressure relief valve, false pressings cause no damage at tool nor dies
 - universal usage: dies for all versions of cable lugs are available

Technical data:	press capacity:	approx. 62 kN
	weight:	2.85 kg
	length:	425 mm

art.-no.: 91130

**transport case out of steel
for HP 20 and dies compare page 7**

Compression dies for AP 20 and HP 20



Dies WM-shape

for crimping WEITKOWITZ cable lugs and connectors of the **standard-series**
Not suitable for cable lugs from other manufacturers!

mm ²	art.-no.	mm ²	art.-no.	mm ²	art.-no.
10	91602	50	91606	150	91610
16	91603	70	91607	185	91611
25	91604	95	91608	240	91612
35	91605	120	91609	300	91613



Dies WM-shape

for crimping cable lugs and connectors of the **euro-series**

mm ²	art.-no.	mm ²	art.-no.	mm ²	art.-no.
6	91619	50	91624	185	91611
10	91620	70	91625	240	91612
16	91621	95	91626	300	91613
25	91622	120	91627		
35	91623	150	91610		



Dies WM-shape

for crimping WEITKOWITZ cable lugs and connectors for **finewiring conductors**
Not suitable for cable lugs from other manufacturers!

mm ²	art.-no.	mm ²	art.-no.	mm ²	art.-no.
10f	91638	50f	91642	150f	91646
16f	91639	70f	91643	185f	91647
25f	91640	95f	91644	240f	91648
35f	91641	120f	91645		



Dies hexagonal-shape

for crimping compression copper cable lugs DIN 46235, compression copper connectors DIN 46267 part 1, compression aluminium and aluminium/ copper cable lugs and connectors

die code no.	Cu mm ²	Al mm ²	art.-no.
5	6	–	91654
6	10	–	91655
8	16	–	91656
10	25	16	91657
12	35	25	91658
14	50	35	91659
16	70	50	91660
18	95	70	91661
20	120	–	91662
22	150	95 + 120	91663
25	185	150	91664
28	240	185	91665
32	300	240	91666

Compression dies for AP 20 und HP 20



Dies mandrel-shape

for crimping noninsulated terminals DIN 46234,
pin-terminals DIN 46230 and connectors DIN 46341 part 1

mm ²	art.-no.	mm ²	art.-no.
6	91731	50	91736
10	91732	70	91737
16	91733	95	91738
25	91734	120	91739
35	91735		



Dies

for crimping insulated terminals

mm ²	art.-no.	mm ²	art.-no.
10	91693	50	91697
16	91694	70	91698
25	91695	95	91699
35	91696		



dies square-shape

for crimping insulated and noninsulated cord-end-sleeves
crimping width: 22 mm

mm ²	art.-no.	mm ²	art.-no.
6	91705	50	91710
10	91706	70	91711
16	91707	95	91712
25	91708	120	91713
35	91709	150	91714



Dies for round-forming

for rounding sector-shaped copper and aluminium conductors
crimping width: 22 mm

mm ² sm	mm ² se	art.-no.	mm ² sm	mm ² se	art.-no.
10	–	91718	95	120	91724
16	–	91719	120	150	91725
25	35	91720	150	185	91726
35	50	91721	185	240	91727
50	70	91722	240	300	91728
70	95	91723			

sm = stranded conductors

se = solid conductors



Transport case

art.-no. 91112

Varnished steel box for keeping the HP 20
and up to 21 pairs of dies

Battery-powered compression tool AP 30

without dies

Battery-powered hydraulic compression tool for crimping cable lugs and connectors up to 400 mm².

- Advantages:
- extremely quick processing due to a two-stage hydraulic pump
 - 360° revolving head with quick opening and closing
 - wide application range up to 400 mm²
 - suitable for cutting cables up to 28 mm outside diameter
 - integrated pressure relief valve, false pressings cause no damage at tool nor dies
 - high capacity due to 3.0 Ah battery: approx. 100 pressings of 185 mm² with one charging
 - an electronic speed regulator integrated in the power button allows an optimal positioning of the pressing
 - high quality NiMh 14.4 voltage 3.0 Ah rechargeable battery
 - light emitting diode serves for controlling battery capacity, crimping proceeding and service intervalls
 - eyelet for balancer
 - universal usage: dies for all versions of cable lugs are available
 - **delivery completely with battery, battery charger and transport steel case (without dies)**



Measurements transport case: 570 x 420 x 103 mm

Technical data:	press capacity:	approx. 80 kN
	operating voltage:	14.4 Volt
	tool measurements:	B 90 x L 435 x H 320 mm
	weight:	6.65 kg (incl. battery)
	battery charger:	220 – 240V~ 60W 50 – 60Hz
	loading time:	approx. 75 minutes

art.-no.: 91160



Replacement battery NiMh 14.4 Volt 3.0 Ah

art.-no.: 91123

Fast battery charger 220 – 240V~ 220W 50 – 60Hz

art.-no.: 91125

reduces time of loading to approx. 27 minutes

Hydraulic hand-operated compression tool HP 30

without dies

Hydraulic hand-operated compression tool for crimping cable lugs and connectors up to 400 mm².

- Advantages:
- extremely quick processing due to a two-stage hydraulic pump
 - wide application range up to 400 mm²
 - hinged head, therefore trouble-free working even at heavily accessible places
 - 360° revolving head with quick opening and closing
 - integrated pressure relief valve, false pressings cause no damage at tool nor dies
 - universal usage: dies for all versions of cable lugs are available



Technical data:	press capacity:	approx. 80 kN
	weight:	5.2 kg
	length:	600 mm

art.-no.: 91150

transport case out of steel
for HP 30 and dies compare page 13

Battery-powered compression tool AP 35

without dies



Battery-powered hydraulic compression tool for crimping cable lugs and connectors up to 300 mm².

- Advantages:
- C-head, ideally for continuous quick working (side loading of connectors)
 - ideal for series-production
 - extremely quick processing due to a two-stage hydraulic pump
 - 360° revolving head
 - application range from 6 up to 300 mm²
 - integrated pressure relief valve, false pressings cause no damage at tool nor dies
 - high capacity due to 3.0 Ah battery: approx. 100 pressings of 185 mm² with one charging
 - an electronic speed regulator integrated in the power button allows an optimal positioning of the pressing
 - high quality NiMh 14.4 voltage 3.0 Ah rechargeable battery
 - light emitting diode serves for controlling battery capacity, crimping proceeding and service intervals
 - eyelet for balancer
 - universal usage: dies for all versions of cable lugs are available
 - **delivery completely with battery, battery charger and transport steel case (without dies)**

Measurements transport case: 570 x 420 x 103 mm

Technical data:

press capacity:	approx. 80 kN
operating voltage:	14.4 Volt
tool measurements:	B 90 x L 435 x H 320 mm
weight:	6.45 kg (incl. battery)
battery charger:	220 – 240V~ 60W 50 – 60Hz
loading time:	approx. 75 minutes

art.-no.: 91165



Replacement battery NiMh 14.4 Volt 3.0 Ah

art.-no.: 91123

Fast battery charger 220 – 240V~ 220W 50 – 60Hz

art.-no.: 91125

reduces time of loading to approx. 27 minutes

Hand-operated hydraulic compression tool HP 35

without dies



Hand-operated hydraulic compression tool for crimping cable lugs and connectors up to 300 mm².

- Advantages:
- C-head, ideally for continuous quick working (side loading of connectors)
 - ideal for series-production
 - extremely quick processing due to a two-stage hydraulic pump
 - 360° revolving head
 - application range from 6 up to 300 mm²
 - integrated pressure relief valve, false pressings cause no damage at tool nor dies
 - universal usage: dies for all versions of cable lugs are available

Technical data:

press capacity:	approx. 80 kN
weight:	5.0 kg
length:	600 mm

art.-no.: 91155

transport case out of steel
for HP 35 and dies compare page 13

Hydraulic compression head HPW 15



Hydraulic compression head for crimping cable lugs and connectors up to 300 mm².

Advantages:

- C-head for a quick and easy insertion and removal of cable lugs and connectors, perfectly suitable for serial crimping
- quick connection because of plug-in coupling free of leakage

Technical data:

hydraulic pressure:	max. 630 bar
press capacity:	approx. 80 kN
length:	335 mm
weight:	3.6 kg

art.-no.: 90602

Hydraulic compression head HPW 17



Hydraulic compression head for crimping cable lugs and connectors up to 400 mm².

Cutting dies for coarsewiring and finewiring cables up to 28 mm outside diameter are available.

Advantages:

- wide application range: cable lugs and connectors 6 - 400 mm²
- light and handy, compact construction
- hinged head, therefore quick insertion and removal of cable lugs and dies
- cutting dies for cables up to 28 mm outside diameter are available
- quick connection via plug-in coupling free of leakage

Technical data:

hydraulic pressure:	max. 630 bar
press capacity:	approx. 80 kN
length:	300 mm
weight:	3.8 kg

art.-no.: 90651

Clamping jaws for HPW 15 and HPW 17



Clamping jaws for a trouble free clamping of HPW 15 and HPW 17 into a vice.

art.-no.: 90601

Compression dies AP 30, HP 30, AP 35, HP 35, HPW 15 and HPW 17



Dies WM-shape

for crimping WEITKOWITZ cable lugs and connectors of the **standard-series**.

Not suitable for cable lugs from other manufacturers!

mm ²	art.-no.	mm ²	art.-no.
10	90604	120	90266
16	90605	150	90267
25	90606	185	90268
35	90607	240	90269
50	90263	300	90270
70	90264	400	90271
95	90265		

AP 35, HP 35, HPW 15 only from 10 up to 300 mm²!



Dies WM-shape

for crimping cable lugs and connectors of the **euro-series**

mm ²	art.-no.	mm ²	art.-no.
6	90431	95	90238
10	90272	120	90239
16	90273	150	90267
25	90234	185	90268
35	90235	240	90269
50	90236	300	90270
70	90237	400	90271

AP 35, HP 35, HPW 15 only from 6 up to 300 mm²!



Dies WM-shape

for crimping WEITKOWITZ cable lugs and connectors for **finewiring conductors**.

Not suitable for cable lugs from other manufacturers!

mm ²	art.-no.	mm ²	art.-no.
10f	90440	95f	90446
16f	90441	120f	90447
25f	90442	150f	90448
35f	90443	185f	90449
50f	90444	240f	90450
70f	90445		



Dies

for crimping insulated terminals

mm ²	art.-no.	mm ²	art.-no.
10	90461	70	90466
16	90462	95	90467
25	90463	120	90468
35	90464	150	90469
50	90465		

AP 35, HP 35, HPW 15 only from 10 up to 120 mm²!

Compression dies for AP 30, HP 30, AP 35, HP 35, HPW 15 and HPW 17



Dies hexagonal-shape

for crimping compression copper cable lugs DIN 46 235, compression copper connectors DIN 46 267 part 1 and compression aluminium and aluminium/copper cable lugs and connectors

die code no.	Cu mm ²	Al mm ²	art.-no.
5	6	–	90278
6	10	–	90279
8	16	–	90280
10	25	16	90281
12	35	25	90282
14	50	35	90283
16	70	50	90284
18	95	70	90285
20	120	–	90286
22	150	95 + 120	90287
25	185	150	90288
28	240	185	90289
32	300	240	90290
34	–	300	90292

AP 35, HP 35, HPW 15 only from K 5 to K 28!



Dies mandrel-shape

for crimping noninsulated terminals DIN 46 234, pin terminals DIN 46 230 and connectors DIN 46 341 part 1

mm ²	art.-no.	mm ²	art.-no.
6	90478	70	90484
10	90479	95	90485
16	90480	120	90476
25	90481	150	90477
35	90482	185	90488
50	90483	240	90489

AP 35, HP 35, HPW 15 from 6 to 150 mm²!



Dies square-shape

for crimping insulated / noninsulated cord-end-sleeves

Crimping width: 24 mm (from 10–120 mm²)
38 mm (from 150–240 mm²)

mm ²	art.-no.	mm ²	art.-no.
10	90633	95	90639
16	90634	120	90640
25	90635	150	90641
35	90636	185	90642
50	90637	240	90643
70	90638		



Dies for compression copper cable lugs 2-conductor-version

for crimping compression copper cable lugs 2-conductor-version crimping width: 12 mm (2 crimpings at each cable lug necessary)

mm ²	art.-no.
2 x 70	99805
2 x 95	99640
2 x 120	99641

Compression dies for AP 30, HP 30, AP 35, HP 35, HPW 15 and HPW 17



Dies for compression tab-connectors, H-shape, copper

for crimping compression tab connectors, H-shape

crimping width: 70/70 mm² = 12 mm

95/95 mm² = 5 mm

120/120 mm² = 5 mm

mm ²	art.-no.
70/70	99805
95/95	99782
120/120	99633

Not suitable for AP 35, HP 35 and HPW 15 !



Dies mandrel-shape

for cable lugs out of stainless steel

mm ²	for use*	art.-no.	mm ²	for use*	art.-no.
1,5-2,5	VA / Cu	91901	50	VA	91908
4-6	VA / Cu	91902	50	Cu	91909
10	VA / Cu	91903	70	VA	91910
16	VA / Cu	91904	70	Cu	91911
25	VA / Cu	91905	95	VA	91912
35	VA	91906	95	Cu	91913
35	Cu	91907			

* = VA / Cu: for stainless steel ropes und copper-conductors (finewiring and stranded-precompressed)

VA: only for stainless steel ropes

Cu: only for copper-conductors (finewiring and stranded-precompressed)



Dies for round forming

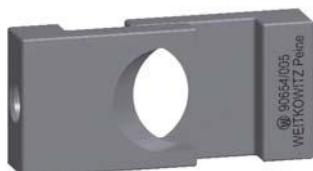
for rounding sector-shaped copper and aluminium conductors

crimping width: 16 mm

mm ² sm	mm ² se	art.-no.	mm ² sm	mm ² se	art.-no.
10	–	90620	95	120	90626
16	–	90621	120	150	90627
25	35	90622	150	185	90628
35	50	90623	185	240	90629
50	70	90624	240	300	90630
70	95	90625			

sm = stranded conductors

se = solid conductors



Cutting die

art.-no.: 90654

for coarsewiring Al- and Cu cables without steel insertion up to 28 mm Ø.

These dies are not suited for cutting solid conductors. Please ask for our special solutions.

Cutting die

art.-no.: 90655

for finewiring copper cables up to 28 mm Ø.

Not suitable for AP 35, HP 35 and HPW 15 !



Transport case

art.-no.: 90299

Varnished steel box for keeping the HP 30 and up to 33 pairs of dies.

measurements:
625 x 250 x 70 mm

Transport case

art.-no.: 90399

Varnished steel box for keeping the HP 35 and up to 31 pairs of dies.

measurements:
698 x 250 x 70 mm

Hydraulic pumps and accessories



Two stage hydraulic pump

art.-no.: 90401

Hydraulic pressure max. 630 bar,
with safety valve und 3 m high pressure hose
weight: 8,7 kg, length: 63 cm, width: 17 cm



Electro-hydraulic 3-cylinder-radial-piston-pump with transport cart

art.-no.: 90407

Delivery rate 0.82 l/min., hydraulic pressure 630 bar,
voltage **3 x 400 V, 50 Hz**, nominal capacity 0.75 kW,
delivery complete with transport cart, electric control, motor protection
switch, pedal switch with 3-point-safety control, safety valve, magnetic
valve and 3 m high-pressure hose.

Without press head.

weight: 30.4 kg

like above, but **version 230, 50 Hz**, delivery rate 0.64 l/min.

art.-no.: 90418

like above, but with **positioning** = as soon as the pedal isn't pedaled
any more the pump stops. But the oil reflux starts not until a second pe-
dal is pressed. So the bus bar punching unit and the bus bar bending
unit can be positioned exactly by repeated pressings of the foot pedal.

Voltage: **3x400 V, 50 Hz**, delivery rate 0.82 l/min., **art.-no.: 90404**

Voltage: **230 V, 50 Hz**, delivery rate 0.64 l/min., **art.-no.: 90413**

Further versions are available on request.



Electro-hydraulic 3-cylinder-radial-piston-pump with rack

art.-no.: 90406

Delivery rate 0.82 l/min., hydraulic pressure 630 bar,
Voltage **3 x 400 V, 50 Hz**, nominal capacity 0.75 kW,
Delivery complete with rack for carrying, electric control, motor protec-
tion switch, pedal switch with 3-point-safety control, safety valve, ma-
gnetic valve and 3 m high-pressure hose.

Without press head.

weight: 24 kg

like above, but **version 230 V, 50 Hz**, oil delivery 0.64 l/min.

art.-no.: 90415

High pressure hose with steel mesh inlay, buckling protector and coupling

length: 3 m **art.-no.: 90409**

length: 5 m **art.-no.: 99955**

length: 10 m **art.-no.: 99956**

extension hose on request



hydraulic oil, 1-litre-tin

art.-no.: 90593

hydraulic oil, 5-litre-canister

art.-no.: 90594

For replacement of oil.

Please use this special oil only.

Battery-powered hydraulic cable cutter AS 30

Battery-powered hydraulic cable cutter for cutting unifilar and multiconductor copper and aluminium cables without steel insertion up to 85 mm² outside diameter (e.g. aluminium-underground cable 3 x 240 mm² + 1 x 95 mm² or 1 x 630 mm², copper conductor 1 x 630 mm²)

- Advantages:
- extremely quick processing due to a two-stage hydraulic pump
 - big cutting range up to 85 mm Ø
 - 340° revolving head
 - high capacity due to 3.0 Ah battery: approx. 35 cuttings 3 x 185 mm² Cu
 - an electronic speed regulator integrated in the power button allows an optimal control of the cutting process
 - high quality NiMh 14.4 voltage 3.0 Ah rechargeable battery
 - light emitting diode serves for controlling battery capacity and service intervals
 - eyelet for balancer
 - **delivery completely with battery, battery charger and transport steel case (without dies)**



Measurements transport case: 610 x 360 x 115 mm

Technical data:	cutting capacity:	approx. 55 kN
	operating voltage:	14.4 Volt
	tool measurements:	B 90 x L 570 x H 320 mm
	weight:	9.42 kg (incl. battery)
	loading time:	approx. 75 minutes

art.-no.: 91180

Replacement battery NiMh 14.4 Volt 3.0 Ah

art.-no.: 91123

Fast battery charger 220 – 240V~ 220W 50 – 60Hz

art.-no.: 91125

reduces time of loading to approx. 27 minutes



Hydraulic hand-operated cable cutter HS 30



Hydraulic cable cutter for cutting multiconductor copper and aluminium cables without steel insertion up to 85 mm² outside diameter (e.g. Al-underground cable 3 x 240 mm² + 1 x 95 mm² or 1 x 630 mm², copper conductor 1 x 630 mm²)

- Advantages:
- extremely quick processing due to a two-stage hydraulic pump
 - big cutting range up to 85 mm Ø
 - 330° revolving head
 - hinged head, therefore trouble-free working even at heavily accessible places
 - clean cut
 - **delivery including a high quality sailcloth bag**

Technical data:	press capacity:	approx. 55 kN
	weight:	7.64 kg
	length:	745 mm

art.-no.: 91170

Hydraulic cutter head HKW 700 and HKW 1000

HKW 700



Hydraulic cable cutter for cutting copper- and aluminium conductors **even with steel insertion** up to 70 mm outside diameter (e.g. coarsewiring copper cables up to about 4x240 mm²)

Advantages:

- hinged head
- extremely stable construction
- very big press capacity

Technical data:

hydraulic pressure: max. 630 bar
 press capacity: approx. 150 kN
 length: 430 mm
 weight: 8.5 kg

art.-no.: 90578

HKW 1000



Hydraulic cable cutter for cutting stranded copper- and aluminium conductors **without steel insertion** up to 95 mm outside diameter or coarsewiring copper cables up to about 3 x 185 mm²

Advantages:

- head can be fouled
- big cutting range
- clean cut

Technical data:

hydraulic pressure: max. 630 bar
 press capacity: approx. 80 kN
 length: 530 mm
 weight: 6.8 kg

art.-no.: 90590

like above but stronger version for cutting copper and aluminium conductors, with or without steel jacket up to 95 mm outside diameter. Output force like above.

Attention: Aluminium conductors with steel-core, steel cables or cables with steel-core cannot be cut.

art.-no.: 90591

Battery powered cutting tool AS 2



Battery powered cable cutter for cutting stranded aluminium and copper cables without steel jacket and without steel-core inside. Maximum cutting capacity: 54 mm outside diameter or up to 4 x 185 mm² aluminium cable or up to 4 x 95 mm² copper cable.

Advantages:

- very easy for handling
- nickel plated blades
- nearly no deformation of the cable because of circular cut
- **delivery completely with battery, battery charger and transport steel case**

Technical data:

press capacity: 25 kN
 operating voltage: 14.4 V
 measurement: 410 x 115 x 105 mm
 weight: 3.14 kg (incl. battery)
 loading time: approx. 1.5 hours
 measurements transport case: 440 x 220 x 130 mm

art.-no.: 90890



Replacement battery 14.4 Volt 3.0 Ah

art.-no.: 90596